

# Full-Size SERIES 380 Modular Integral Filter/Regulators

# CFDR380 Models Port Sizes: 3/8, 1/2, 3/4



Model Shown: CFDR380-G

- ◆ Filter (FD380) and regulator (R380) consolidated into a single space-saving assembly.
- ◆ Modular or inline mounting.
- ◆ 5- $\mu$ m-rated polyethylene filter element; optional 40- $\mu$ m element.
- ◆ Polycarbonate plastic bowl with steel shatter-guard; optional metal bowl with sight glass.
- ◆ Internal automatic drain; optional manual drain and internal float drain.
- ◆ Self-relieving diaphragm-type regulator; non-relieving optional.
- ◆ Pressure adjustment locking key; tamper-resistant pressure setting.
- ◆ Pressure gauge included; two gauge ports.
- ◆ **NPTF** port threads; optional **SAE** or **BSP** threads.

## SPECIFICATIONS

### Ambient/Media Temperature:

Plastic bowl: 40° to 125°F (4° to 52°C).  
Metal bowl: 40° to 175°F (4° to 79°C).

**Body:** Zinc.

**Bonnet:**

**Nylon;** aluminum with optional 0-175 psig spring.

**Bowl:** 9-Ounce (270-ml) polycarbonate plastic with steel shatterguard; optional aluminum bowl with clear nylon sight glass.

**Bowl Drain:** Internal automatic drain; optional manual drain and internal float drain.

**Cap Color:** Black.

**Filter Element:** 5- $\mu$ m-rated polyethylene; optional 40- $\mu$ m element.

**Fluid Media:** Compressed air.

**Inlet Pressure:**

Minimum: 15 psig (1 bar) with automatic drain, 30 psig (2 bar) with internal float drain.

Plastic bowl: 150 psig (10 bar).

Metal bowl: 200 psig (14 bar).

**Outlet Pressure:** Adjustable up to 125 psig (8.6 bar); optional adjusting springs.

**Pressure Adjustment Locking Key:** Removable.

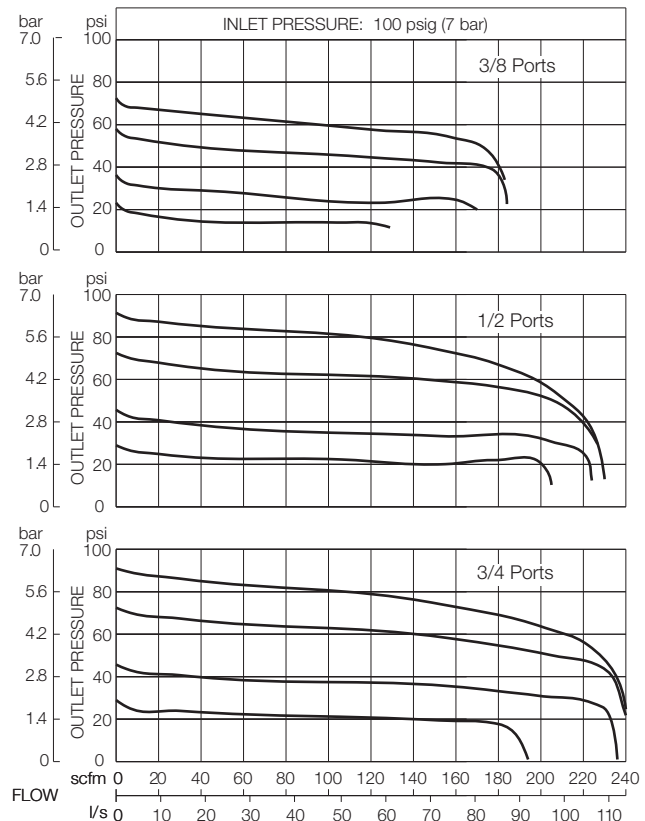
**Pressure Gauge:** 0 to 200 psig (14 bar); 1/4 NPT gauge ports front and rear.

**Panel Mounting:** 2.05-inch (52.1-mm) hole required.

**Seals:** Nitrile.

**Valve:** Brass.

## FLOW CHARTS



## DIMENSIONS inches (mm)

Bowl	A	B *	C **	Depth †	Weight †
					lb (kg)
Polycarbonate	3.5 (88)	7.7 (195)	5.4 (137)	2.9 (73)	3.69 (1.68)
Metal	3.5 (88)	7.6 (193)	5.4 (137)	2.9 (73)	3.69 (1.68)

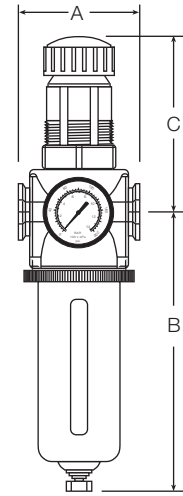
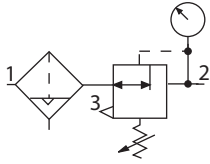
\* Bowl removal clearance: add 3.1 (79).

\*\* Dome removal clearance: add 0.63 (16).

† Less gauge.

### ISO Filter/Regulator Symbol

**Automatic Drain  
Self-relieving**



## REPLACEMENT FILTER ELEMENT KITS

Element Rating	Kit Number
5-µm Polyethylene (Std element)	A115-106PE5
40-µm Polyethylene	A115-106PE3
5-µm Bronze	A115-106E5
20-µm Bronze	A115-106E4

## ORDERING INFORMATION

Change the letters in the sample model number below to specify the filter/regulator you want.

**B CFD R 380-3 Y G W**

### BOWL TYPE

Plastic with guard ..... Leave Blank  
Metal with sight glass ..... B

### BOWL DRAIN

Internal automatic drain ..... CFD  
Manual drain ..... CF  
Internal float drain ..... CF5A

### PORT SIZE

3/8 NPTF ..... 3  
1/2 NPTF ..... 4  
3/4 NPTF ..... 6  
3/4-16 UNF SAE ..... S8  
7/8-14 UNF SAE ..... S10

### MOUNTING BRACKETS

See page 320.

### PORT TYPE

NPTF threads ..... Leave Blank  
BSPB threads ..... W

### OPTIONS (More than one option can be chosen. Add in alphabetical order)

None ..... Leave Blank  
Panel mounting nut ..... P  
0-200 psig Gauge ..... G

### OPTIONS (More than one option can be chosen. Add in alphabetical order)

None ..... Leave Blank  
Non-relieving ..... A  
40-µm rated filter element ..... E3  
Sintered bronze filter element  
5-µm rating ..... E5  
20-µm rating ..... E4  
0-175 psig (0-12 bar) ..... H\*\*  
Adjusting spring  
0-50 psig (0-3.4 bar) ..... L  
Less Drain Cock ..... LDC  
(1/4-NPT female port instead.  
Use Manual drain option under  
**BOWL DRAIN** section and only  
available in Metal Bowl, under  
**BOWL TYPE**.)  
Metal Dome ..... MD  
Limit maximum psig setting .... M\*  
Tee handle ..... T

\* Insert maximum limited pressure.

\*\* H option spring includes metal dome