

DESCRIPTION

Piston rod locking unit series "WBZ" is a mechanical device to fit on ISO 15552 cylinders (series X and CPUI); its function is to lock the piston rod in any position. This solution allows to lock the cylinder stroke each time that there's a pressure fall. Locking force is, in any case, higher than the force given off by the cylinder fed at 10 bar. It has static operation (cylinder piston rod not moving); it's necessary to preliminary stop the cylinder piston rod before proceeding with mechanical locking. Piston rod locking unit series "WBZ" must not be considered as a safety device.



1

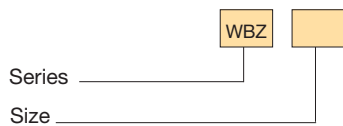
TECHNICAL DATA

Release pressure	3 ÷ 6 bar with cylinder feed pressure 0 ÷ 10 bar							
Working temperature	0 ÷ +80 °C (-5 °C with dry air)							
Fluid	Filtered, unlubricated or continuous lubricated compressed air							
Size	32, 40, 50, 63, 80, 100, 125							
Port size	Ø 32 ÷ 63 = G 1/8 Ø 80 ÷ 125 = G 1/4							
Locking type	Mechanical - Only axial (bi-directional)							
Release	Through pneumatic control							
Condition in absence of pressure	Locked							
Locking force with static load	Size	32	40	50	63	80	100	125
	N	790	1240	1930	3060	5400	7700	12040

MATERIALS

Body	Anodized aluminium alloy
Blades	Brass
Pistons	Acetal resin
Seals	NBR rubber
Springs	Steel

ORDER KEY



ORDER EXAMPLES

Piston rod locking unit, size 50 WBZ50
 Piston rod locking unit, size 80 + cylinder series "CPUI" Ø80, 150 mm stroke, fit for piston rod locking unit, non-magnetic piston type, ASSEMBLED: WBZ80 + 80/150 CPUI/NZ + M/WBZ

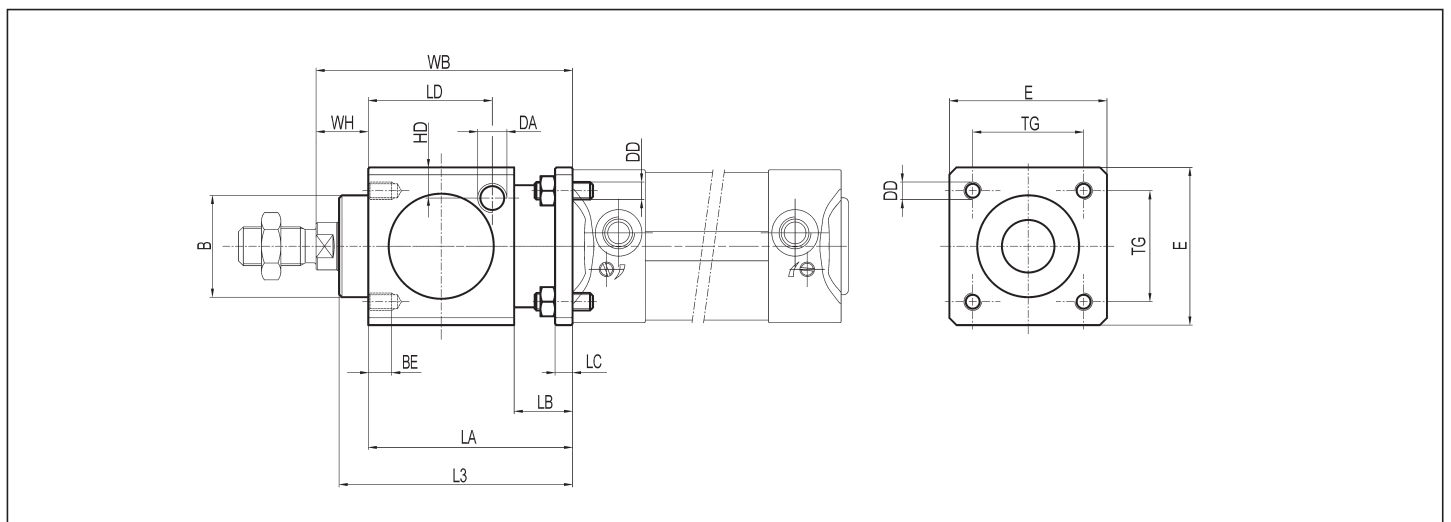
SPARE PARTS

BLADES KIT	Size/PM/WBZ
PISTON KIT	Size/SG/WBZ

ASSEMBLY

"WBZ" + cylinder series "X" or "CPUI", "Z" version	M/WBZ
--	-------

WBZ PISTON ROD LOCKING UNIT



DIMENSIONS AND WEIGHTS

SIZE	B	BE	E	DA	DD	HD	L3	LA	LB	LC	LD	TG	WB	WH	WEIGHT (g)
32	30	8	47	G 1/8	M6	9	67,5	60	20	6	33,25	32,5	86	26	400
40	34,9	8	54	G 1/8	M6	9	80	70	20	6	42,5	38	100	30	600
50	40	12	65	G 1/8	M8	12,5	100	90	24	8	58	46,5	127	37	1100
63	45	12	75	G 1/8	M8	17,5	100	90	24	8	59	56,5	127	37	1500
80	45	16	95	G 1/4	M10	17,5	120	110	32	12	69	72	156	46	2600
100	55	16	114	G 1/4	M10	20	120	110	32	12	69	89	161	51	3500
125	60	20	138	G 1/4	M12	19	156	140	45	20	84,5	110	205	65	6500

P.S.: TECHNICAL INFORMATION (see the same ones for cylinders series "U" on page 1.7)