

# MINIATURE Integral Filter/Regulators

# CFDR55M, CFDR56M Models Port Sizes: 1/8, 1/4



Model Shown: CFDR55M-2

- ◆ Filter and regulator consolidated in a single assembly.
- ◆ Inline mounting.
- ◆ 5- $\mu$ m-rated polyethylene filter element; optional sintered bronze elements.
- ◆ High-strength polycarbonate plastic filter bowl; optional aluminum bowl.
- ◆ Internal automatic drain; optional manual drain.
- ◆ Piston-type regulator (CFDR55M models) or diaphragm-type (CFDR56M models).
- ◆ Self-relieving regulator; non-relieving optional.
- ◆ Pressure gauge.
- ◆ NPTF port threads; optional BSPP threads.

## SPECIFICATIONS

### Ambient/Media Temperature:

40° to 125°F (4° to 52°C).

**Body:** Aluminum.

**Bowl:** 2-Ounce (60-ml) capacity polycarbonate plastic; optional aluminum bowl.

**Dome and Knob:** Acetal.

### Filter Drain:

Internal automatic drain; optional manual drain.

**Filter Element:** 5- $\mu$ m-rated polyethylene; optional 5- $\mu$ m, 20- $\mu$ m, or 40- $\mu$ m sintered bronze.

**Fluid Media:** Compressed air.

### Inlet Pressure:

15 psig (1 bar) minimum with automatic drain.

Plastic bowl: 150 psig (10 bar) maximum.

Metal bowl: 200 psig (14 bar) maximum.

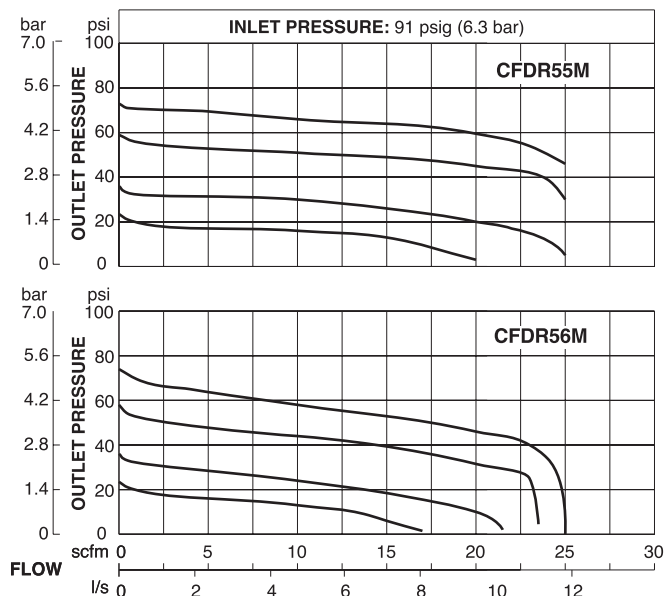
**Outlet Pressure:** Adjustable up to 100 psig (7 bar).

**Pressure Gauge:** 0 to 160 psig (10.3 bar); 1/8 NPT gauge ports front and rear.

**Panel Mounting:** 1-3/16 inch (30 mm) hole required.

**Seals:** Nitrile.

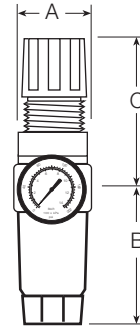
## FLOW CHARTS



## DIMENSIONS inches (mm)

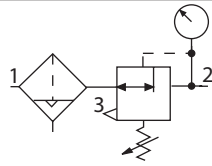
Bowl	Ports	A	B	C	Depth †	Weight † lb (kg)
Plastic	1/8, 1/4	1.6 (41)	3.6 (92)	2.6 (67)	1.6 (41)	0.53 (0.24)
Metal	1/8, 1/4	1.6 (41)	4.3 (109)	2.6 (67)	1.6 (41)	0.53 (0.24)

† Less gauge.



### ISO Filter/Regulator Symbol

**Automatic Drain**  
**Self-relieving**



## REPLACEMENT FILTER ELEMENT KITS

Element Type	Kit Number
5-µm polyethylene (Std element).....	KA130-27PE5
5-µm bronze .....	KA130-27E5
20-µm bronze .....	KA130-27E4
40-µm bronze .....	KA130-27E3

## ORDERING INFORMATION

Change the letters in the sample model number below to specify the filter/regulator you want.

**B C FD R55M - 2 Y G W**

### BOWL TYPE

Plastic bowl ..... Leave Blank  
Metal bowl.....B

### FILTER DRAIN

Internal automatic drain ..... FD  
Manual drain..... F

### REGULATOR TYPE

Piston type .....R55M  
Diaphragm type.....R56M

### PORT SIZE

1/8 NPTF..... 1  
1/4 NPTF..... 2

### PORT TYPE

NPTF Threads ..... Leave Blank  
BSPP threads ..... W

### OPTIONS (More than one option can be chosen)

0-160 psig Gauge .....Leave Blank  
No psig Gauge ..... NG  
Plastic nut ..... P  
Metal nut .....PN  
Hex plastic mounting nut ..... PE

### OPTIONS (More than one option can be chosen)

None ..... Leave Blank  
Non-relieving ..... A  
Small valve seat (provides lower flow, greater precision)..... C  
Metal dome (threaded)..... D  
Sintered bronze filter element:  
5-µm rating ..... E5  
20-µm rating ..... E4  
40-µm rating ..... E3  
Adjusting springs:  
0-125 psig (0-8.6 bar) ..... H  
0-50 psig (0-3.4 bar) ..... L  
0-8 psig (0-0.6 bar) ..... L8  
0-15 psig (0-1.0 bar) ..... L15  
0-30 psig (0-2.1 bar) ..... L30

### Tamper-resistant spinning

knob (psig preset)..... MV(\*)  
No gauge ports ..... NP  
Viton seals..... V

\*Insert maximum limited pressure.

### MOUNTING BRACKETS

See page 276.