

# External Float-Actuated Drain

## Automatic Float Drain

# BD130 Models

## Port Sizes: 1/4, 1/2



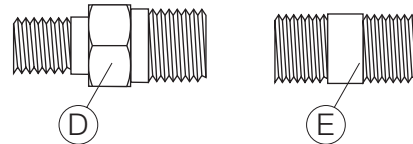
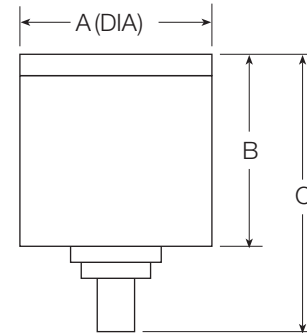
Model Shown: BD130-2

- ◆ Heavy-duty, corrosion proof
- ◆ Auto draining where pressure drop is not available

The automatic float drain attaches to the bottom of drain legs (or vertical air lines) to remove accumulated moisture automatically. It is also suitable for attachment to any **VANGUARD** or **SERIES 380** filter; this requires the **LDC** (less drain cock) option. In addition, it can be used as the drain on Series 25 MP-Filenco dryer/filters.

The drain is a normally open, pilot-operated valve rated for 10-250 psig (0.7-17 bar) at temperatures up to 175°F (79°C). The valve is held closed by line pressure. The pilot valve is never submerged in water, and its discharge is operated by system air pressure. The float is extremely light; it cannot leak or hold fluid. All parts are corrosion proof.

The drain has a manual override to check proper functioning. Discharge is easily piped to a remote location. When the compressed air system is shut down, the valve returns to its normally open condition and water will drain by gravity.



### DIMENSIONS inches (mm)

Bowl	A	B	C	Depth
BD130-2	2.5 (64)	2.4 (60)	3.3 (83)	2.5 (64)
BD130-4	2.5 (64)	2.4 (60)	3.3 (83)	2.5 (64)

### PORT SIZES

Model Number	Inlet (NPTF)	Outlet Drain (NPTF)	Pipe Nipple (NPT)
BD130-2	1/4	1/8	(D) 1/4 x 1/8 (E) 1/4 x 1/4
BD130-4	1/2	1/8	Not supplied with product