

# MINIATURE Precision Regulators

# R57M Models Port Sizes: 1/8, 1/4



Model Shown: R57M-2G

- ◆ Inline mounting.
- ◆ Diaphragm-type design.
- ◆ Self-relieving; non-relieving optional.
- ◆ Pressure gauge.
- ◆ NPTF port threads; optional BSPP threads.
- ◆ Repeatability  $\pm 0.25$  psig (0.017 bar)

## SPECIFICATIONS

### Ambient/Media Temperature:

40° to 125°F (4° to 52°C).

**Body:** Aluminum.

**Dome:** Aluminum.

**Fluid Media:** Compressed air.

**Inlet Pressure:** 300 psig (21 bar) maximum.

**Outlet Pressure:** Adjustable up to 50 psig (3.4 bar).  
Adjustable up to 160 psig (10.3 bar) with optional  
springs. With inlet pressure of 100 psig (7 bar)  
repeatability is within 0.25 psig

**Pressure Gauge:** 0 to 160 psig (10.3 bar); 1/8 NPT  
gauge ports front and rear.

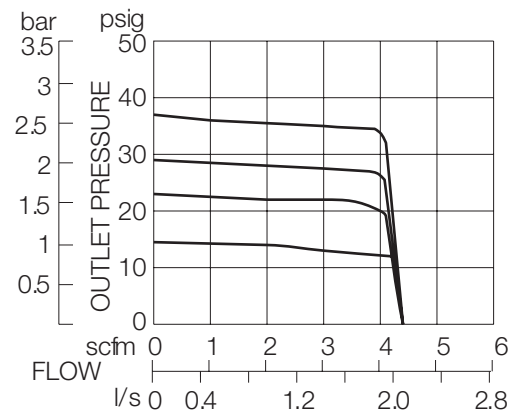
**Panel Mounting:** 1-3/16 inch (30 mm) hole required.

**Seals:** Nitrile.

**Self-relieving:** Non-relieving optional.

## FLOW CHART

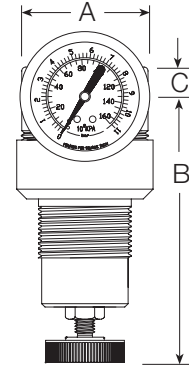
Inlet Pressure: 91 psig (6.3 bar)



**DIMENSIONS** inches (mm)

A	B	C	Depth †	Weight † lb (kg)
1.8 (44)	3.4 (86)	0.4 (10)	1.8 (44)	0.38 (0.16)

† Less gauge.



**ORDERING INFORMATION**

Change the letters in the sample model number below to specify the regulator you want.

**R57M - 2 Y G W**

**PORT SIZE**

- 1/8 NPTF..... 1
- 1/4 NPTF..... 2

**PORT TYPE**

- NPTF Threads ..... Leave Blank
- BSPP threads ..... W

**OPTIONS** (*More than one option can be chosen*)

- None..... Leave Blank
- Non-relieving ..... A
- Springs: (0-50 psig standard)
  - For optimum performance operating pressure should fall approximately in the middle of the spring range.
  - 0-60 psig (0-4.1 bar) ..... H
  - 0-20 psig (0-1.4 bar) ..... L20
  - 0-10 psig (0-0.7 bar) ..... L10
  - 0-5 psig (0-0.3 bar) ..... L5
- No gauge ports ..... NP
- Viton seals..... V

**OPTIONS** (*More than one option can be chosen*)

- Delete gauge ..... Leave Blank
- 0-160 PSI Gauge ..... G
- Plastic mounting nut ..... P
- Metal mounting nut..... PN
- Hex plastic mounting nut ..... PE

**MOUNTING BRACKETS**

See page 276.