

# MINIATURE Externally Piloted Regulators

# PR55M, PR56M Models Port Sizes: 1/8, 1/4



Model Shown: PR56M-1G

- ◆ Inline mounting.
- ◆ Piston-type design (**PR55M** models) or diaphragm-type design (**PR56M** models)
- ◆ Self-relieving; non-relieving optional.
- ◆ Pressure gauge.
- ◆ **NPTF** port threads; optional **BSPP** threads.

## SPECIFICATIONS

**Ambient/Media Temperature:**

40° to 125°F (4° to 52°C).

**Body and Dome:** Aluminum.

**Fluid Media:** Compressed air.

**Inlet Pressure:** 300 psig (21 bar) maximum.

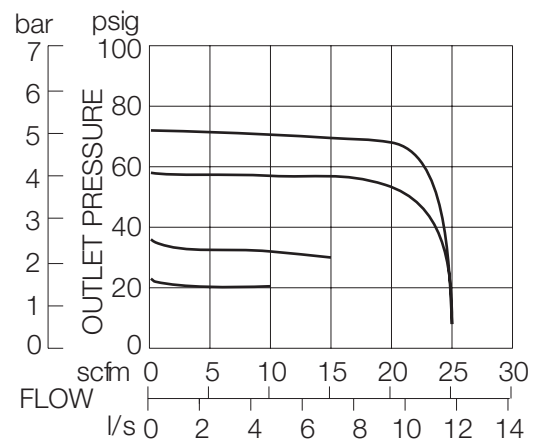
**Outlet Pressure:** Adjustable up to 125 psig (8.6 bar).

**Pressure Gauge:** 0 to 160 psig (10.3 bar); 1/8 NPT gauge ports front and rear.

**Seals:** Nitrile.

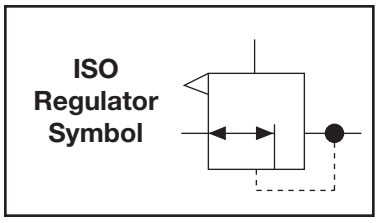
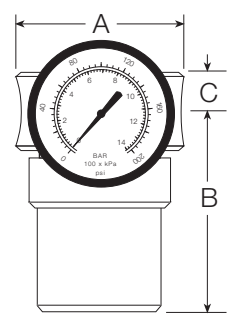
## FLOW CHART

Inlet Pressure: 91 psig (6.3 bar)



**DIMENSIONS** inches (mm)

A	B	C	Depth	Weight lb (kg)
1.6 (41)	1.8 (46)	0.38 (9.5)	1.6 (41)	0.25 (0.11)



**ORDERING INFORMATION**

Change the letters in the sample model number below to specify the regulator you want.

**PR56M - 2 Y G W**

**REGULATOR TYPE**  
 Piston ..... PR55M  
 Diaphragm ..... PR56M

**PORT SIZE**  
 1/8 NPTF..... 1  
 1/4 NPTF..... 2

**OPTIONS**  
 None..... Leave Blank  
 Non-relieving ..... A

**PORT TYPE**  
 NPTF Threads ..... Leave Blank  
 BSP threads ..... W

**GAUGE**  
 None ..... Leave Blank  
 0-160 PSI Gauge ..... G

**No mounting bracket available.**