

Full-Size SERIES 380 Modular Integral Filter/Regulators

CFDR380 Models Port Sizes: 3/8, 1/2, 3/4



Model Shown: CFDR380-G

- ◆ Filter (FD380) and regulator (R380) consolidated into a single space-saving assembly.
- ◆ Modular or inline mounting.
- ◆ 5- μ m-rated polyethylene filter element; optional 40- μ m element.
- ◆ Polycarbonate plastic bowl with steel shatter-guard; optional metal bowl with sight glass.
- ◆ Internal automatic drain; optional manual drain and other drain types.
- ◆ Self-relieving diaphragm-type regulator; non-relieving optional.
- ◆ Pressure adjustment locking key; tamper-resistant pressure setting.
- ◆ Pressure gauge included; two gauge ports.
- ◆ NPTF port threads; optional SAE or BSPP threads.

SPECIFICATIONS

Ambient/Media Temperature:

Plastic bowl: 40° to 125°F (4° to 52°C).
Metal bowl: 40° to 175°F (4° to 79°C).

Body: Zinc.

Bonnet:

Nylon: aluminum with optional 0-175 psig spring.

Bowl: 9-Ounce (270-ml) polycarbonate plastic with steel shatterguard; optional aluminum bowl with clear nylon sight glass.

Bowl Drain: Internal automatic drain; optional manual drain and other drain types.

Cap Color: Black.

Filter Element: 5- μ m-rated polyethylene; optional 40- μ m element.

Fluid Media: Compressed air.

Inlet Pressure:

15 psig (1 bar) minimum with automatic drain.
Plastic bowl: 150 psig (10 bar).
Metal bowl: 200 psig (14 bar).

Outlet Pressure: Adjustable up to 125 psig (8.6 bar); optional adjusting springs.

Pressure Adjustment Locking Key: Removable.

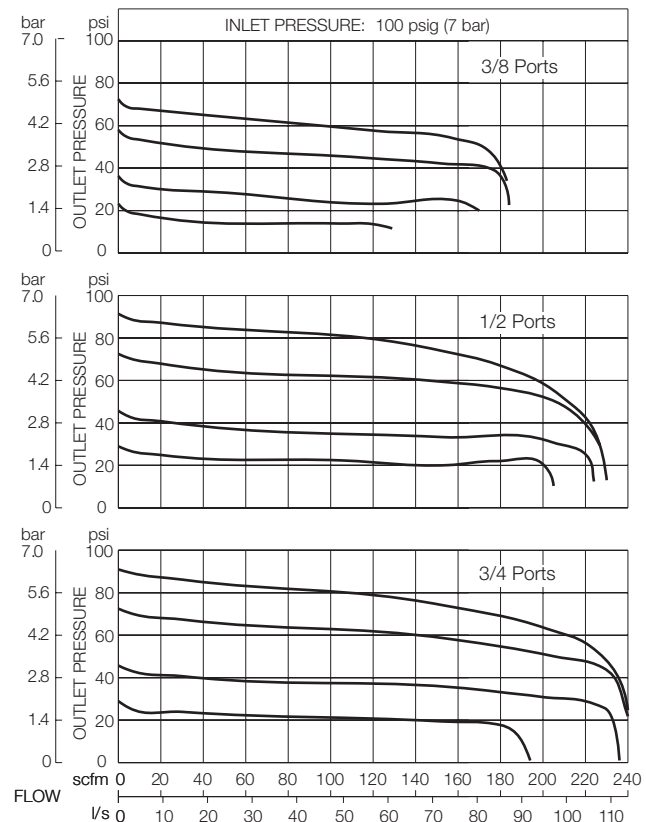
Pressure Gauge: 0 to 200 psig (14 bar); 1/4 NPT gauge ports front and rear.

Panel Mounting: 2.05-inch (52.1-mm) hole required.

Seals: Nitrile.

Valve: Brass.

FLOW CHARTS



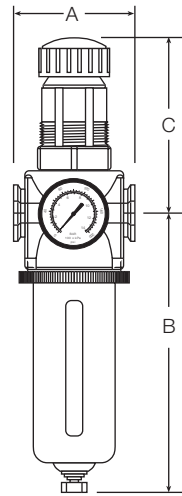
DIMENSIONS inches (mm)

| Bowl | A | B * | C ** | Depth † | Weight † lb (kg) |
|---------------|----------|-----------|-----------|----------|---------------------|
| Polycarbonate | 3.5 (88) | 7.7 (195) | 5.4 (137) | 2.9 (73) | 3.69 (1.68) |
| Metal | 3.5 (88) | 7.6 (193) | 5.4 (137) | 2.9 (73) | 3.69 (1.68) |

* Bowl removal clearance: add 3.1 (79).

** Dome removal clearance: add 0.63 (16).

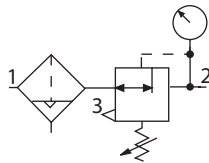
† Less gauge.



ISO Filter/Regulator Symbol

Automatic Drain

Self-relieving



REPLACEMENT FILTER ELEMENT KITS

| Element Rating | Kit Number |
|---------------------------------|-------------|
| 5-µm Polyethylene (Std element) | A115-106PE5 |
| 40-µm Polyethylene | A115-106PE3 |
| 5-µm Bronze | A115-106E5 |
| 20-µm Bronze | A115-106E4 |

ORDERING INFORMATION

Change the letters in the sample model number below to specify the filter/regulator you want.

B **CFD** **R** **380-3** **Y** **G** **W**

BOWL TYPE
 Plastic with guard Leave Blank
 Metal with sight glass B

BOWL DRAIN
 Internal automatic drain CFD
 Manual drain..... CF

PORT SIZE
 3/8 NPTF..... 3
 1/2 NPTF..... 4
 3/4 NPTF..... 6
 3/4-16 UNF SAE S8
 7/8-14 UNF SAE S10

PORT TYPE

NPTF Threads Leave Blank
 BSPP threads W

OPTIONS (More than one option can be chosen)

None Leave Blank
 Panel mounting nut P
 0-200 psig Gauge G

OPTIONS (More than one option can be chosen)

None Leave Blank
 Non-relieving A
 40-µm rated filter element..... E3
 Sintered bronze filter element
 5-µm rating E5
 20-µm rating..... E4
 0-175 psig (0-12 bar) H**
 Remove adjusting key JJ
 Adjusting spring
 0-50 psig (0-3.4 bar) L
 Metal Dome MD
 Limit maximum psig setting M*
 Tee handle..... T

* Insert maximum limited pressure.

** H option spring includes metal dome

MOUNTING BRACKETS

See page 276.